

Winter 2009

Issue #9

We Thank you for
your support in
2009!

We wish you a
Merry Christmas
and a Happy New

Coffee Stop Winter Hours

Tuesday, Wednesday, Thursday
9:00 - 10:00 AM

We thank our volunteers:

Craig Hague

Lloyd Smith

Joyce and Vic Stuckey

Society Meetings Second Tuesday
of the Month. Please join us at
the elevator office, coffee
served.

Stettler P & H Elevator Preservation Society Newsletter

The Christmas Party

Our annual Christmas party is on January 16TH at 6:30 pm at the Elks Golf Club House. Come join us for a meal, celebration of the 2009 accomplishments, and a summary of the projects for the New Year. The price for the meal is \$15.00 per person.

If you would like to donate a door prize - hand crafted items most welcome.

Please contact:

Joyce and Vic at 403-742-4273
or Stan 403-740-4799

or Craig 403-742-5847

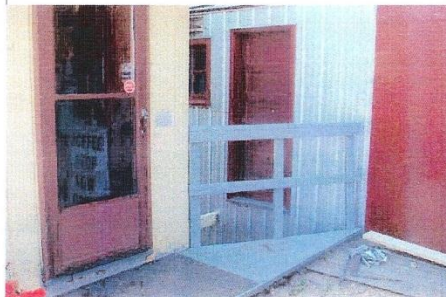
Everyone Welcome!

Community Spirit Program

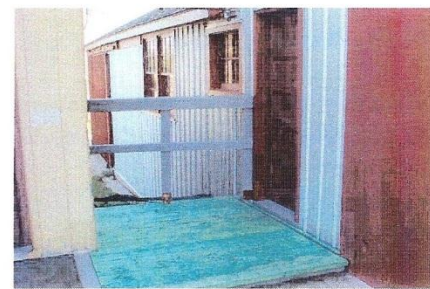
This a lottery sponsored program That matches cash donations to eligible organizations. We are eligible and are hoping to receive approximately \$1,800.00 from donations received in 2008. Our coffee money and other cash donations will be included in our 2009 application.

Charitable Status

Our Society now has charitable status. This means we can give tax receipts for donations over \$20.00. Memberships unfortunately are not eligible.



Elevator Door & Landing, Summer 2009



Elevator Door & Landing, Fall 2009

Projects Requiring Volunteers

- Work on Feed Shed
- Fasten Tin to Office Roof
- Mow Grass or Shovel Snow
- Assist with cleaning of Office and Elevator
- Assist with School Tours
- Install Wagon Lift
- Paint Projects

In Memoriam

- Jim Baugh
 Clarence Blaney
 W. A. "Bill" Chapman
 Mae Dempsey
 Earl A. Gibbon
 Rudolph Hennel
 Werner Krueger
 Ken Penosky
 Reta Pooley
 Lydia Scheerschmeidt
 Hardy Scheller
 Leo Shuckburgh
 Maurice Smith
 Morris Turville
 Rod Walstrom

Donations have been made to the Society in memory of those listed in our "In Memoriam" tribute.

Sponsorships

Thanks to the following businesses that have supported us:

- Craig Parks Construction
 Swartz Home Building
 Jay-Dee Electric
 Alberta Prairie Steam Tours
 East Central Alberta Heritage Society
 Marketing and More
 Stettler Independent
 Q-14 Radio
 Stettler Flooring and Paint
 Advanced Systems
 First Pick Cranes Ltd



Many thanks to all who donated money, material and labour throughout 2009.

The Elevator Gift Shop

We have a variety of items available for sale in our gift shop.

- | | |
|----------------------|----------------|
| Elevator Books | Magnets |
| Calendars | Greeting Cards |
| Plaques and Pictures | License Plates |
| Souvenir Boxes | |
| Key Chains | |

All profits help with the preservation of the elevator.



Feed Mill Drive Through Door Spring 2009

2010 Annual Memberships

Have you got your 2010 membership? We would greatly appreciate you considering a 2010 membership if you have not purchased one. We are applying for a grant in 2010 and we will be required to have matching funds.



Feed Mill Drive Through Door. Winter 2009

P & H Elevator Society
Box 1437, Stettler, AB T0C 2L0

Membership

Adult - \$20/year

Lifetime - \$150

Circle the type of membership.

Name: _____

Address: _____

Postal Code: _____

Telephone: _____

Email: _____